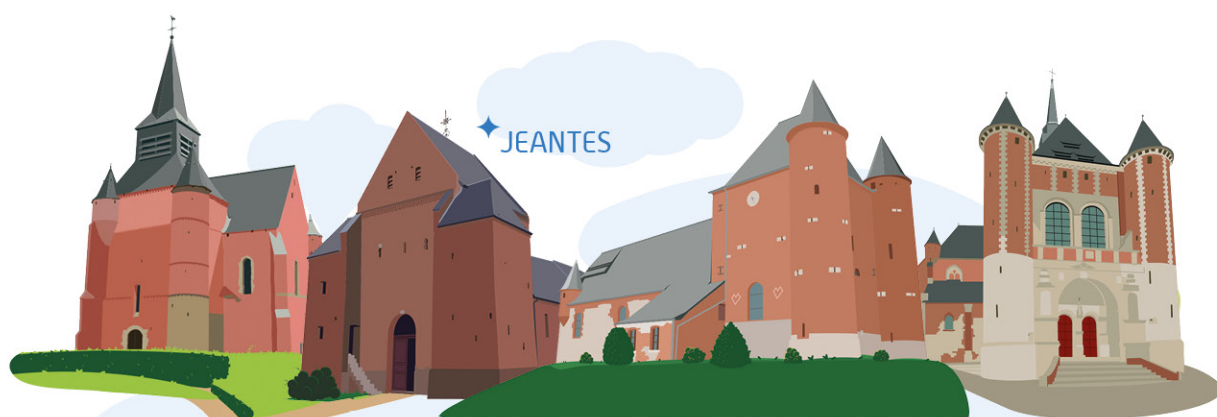




# MUST-SEES in Thiérache



◆ JEANTES

◆ BURELLES

◆ ENLANCOURT

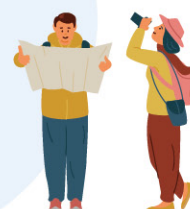
◆ MONTCORNET



◆ WIMY

◆ FLAVIGNY-LE-GRAND  
ET BEURAIN

◆ PLOMION



◆ GRONARD

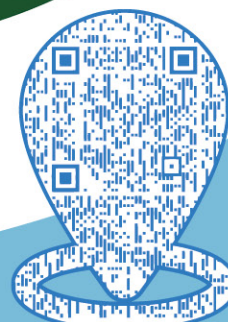
◆ PARFONDEVAL

◆ PRISCES



## ◆ ◆ FORTIFIED CHURCHES

The Thiérache, a historical passage land, is adorned with many fortresses dating from the Middle Ages to the 17th century. While roaming its lush countryside, you will discover its extraordinary heritage. Request a brochure!



### OUR SCENIC ROUTES

You can follow 4 different roads using our Tourist Map.

Departing from Vervins, tour the fortified churches tour to be lead to the most symbolic fortresses of the Brune and the Serre valley.

In the meantime, discover typical washing houses via the 'Route des Lavoirs', well kept treasures in the midst of each village.

Further north, be sure not to miss the roads of the Oise and Ton valley!



# THE FAMILISTÈRE AT GUISE



Place du Familistère • 02120 GUISE  
03 23 61 35 36 • [accueil@familistere.com](mailto:accueil@familistere.com)

Jean-Baptiste André Godin [1817-1888], founder of the renowned Godin stove factory, dreamt of a company which would offer its employees the 'equivalents of wealth'. To this end, he created the Familistère, or 'Social Palace', in the second half of the 19th century. Discover the Familistère community through its museum, show apartment, workers' housing, its garden, shops, the Familistère Theatre and the swimming pool-cum-laundry.



[familistere.com](http://familistere.com)

## GUISE CASTLE



Allée Maurice Duton • 02120 GUISE • 03 23 61 11 76  
[chateauguise@clubduvieuxmanoir.fr](mailto:chateauguise@clubduvieuxmanoir.fr)

From the Medieval castle, dominated by its keep, the Dukes of Guise built one of Northern Europe's largest fortresses in the 16th century, a stronghold which was later to attract the attention of Vauban. Bombed during the First World War, the castle then served as a dumping site for a septic tank engineer and almost disappeared. Fortunately, in 1952, a young local named Maurice Duton decided to save the castle and founded the Club du Vieux Manoir, a youth organisation who to this day organise work camps and activities to bring the castle back to life!



[chateauguise.fr](http://chateauguise.fr)

## BIKE RIDES

# EUROVELO 3 THE SCANDIBÉRIQUE



14 EuroVelo 3 routes, adapted to families, groups of friends or sport cyclists, are available for free from the Tourist Office.

EuroVelo 3, or the 'pilgrims' road', is a cycle trail starting in Trondheim, Norway and ending in Santiago de Compostela in Spain. France is crossed by 1,600km of the trail, also known here as the 'Scandibérique'. It goes through 18 departments, including Aisne. Running along the former Axe Vert (or Green Path) in Thiérache between Guise and Hirson, EuroVelo 3 offers nature lovers the chance to explore, in all safety, the Oise Valley with its bocage landscape and fortified churches.



[scandiberique.com](http://scandiberique.com)

LA 7  
SCANDIBÉRIQUE  
Le chemin qui vous emmène loin



Also download the Louison Pignon app which offers a brand new treasure hunt 'The Thiérache is Losing its Marbles'!







## BLANGY WATERFALL AND NATURAL AREA

... Route de Blangy • 02500 HIRSON

Nestled in the heart of the Hirson forest and a stone's throw from the Belgian border, the River Oise puts on a show! This is an ideal spot for a refreshing family walk. Upstream from the waterfall, a 2km footpath will take you around the waterway. Just a few kilometres away, and accessible by car, the Rocher du Pas Bayard is also worth a visit.

In addition to accommodation at the **Domaine de Blangy**, the site offers activities such as canoeing, climbing, or bicycle rental from **Thiérache Sport Nature**.



## SAINT-MICHEL ABBEY

... 8 rue du Chamiteau • 02830 SAINT-MICHEL  
03 23 58 87 20 • [contact@abbaye-de-st-michel.fr](mailto:contact@abbaye-de-st-michel.fr)

This Benedictine abbey, founded in 945, has been perfectly preserved. It houses the large Boizard organ dating from 1714, and murals depicting the life of Saint Benedict, which were discovered only recently in the cloister. In the abbey outhouses, a museum devoted to forestry and rural life houses more than 15,000 exhibits including vast collections of basketry and timber-related items.



## PARFONDEVAL VILLAGE

... ONE OF 'FRANCE'S MOST BEAUTIFUL VILLAGES'  
Rue de la Place • 02360 PARFONDEVAL  
06 22 44 15 91 • [amis.parfondeval@gmail.com](mailto:amis.parfondeval@gmail.com)

This picturesque village in Thiérache has preserved its rural charm with its pond in the main square. It is officially classified as one of 'France's Most Beautiful Villages'. The 16th-century fortified church was also built to serve as a refuge. The tiny village streets are home to fine examples of rural built heritage, a wash house, a Protestant temple and bocage landscape. A handful of local farmers and livestock breeders keep this small village of 160 inhabitants alive. The Association 'Parfondeval's Friends' brings this small 160-inhabitants village truly alive.

Take a 1.4km micro walk with a free audio guide.  
That can be requested at the 'Relais de la Chouette' restaurant.

MUST-SEES  
in **Thiérache**



# THE MAROILLES

Maroilles, the most sophisticated of strong cheeses is the only AOP or protected origin cheese from the Hauts-de-France region. It has been produced since the 11th century in Thiérache, where cattle graze in the bocage meadows of the Nord and Aisne departments. Depending on its format, it is matured for 3 to 5 weeks, during which it is brushed, turned and washed with salted water. You can buy Maroilles cheese directly from our local producers below:



[maroilles-aop.fr](http://maroilles-aop.fr)



The Thiérache is also famous for its apples.  
And when you have the apples, you also have juice and cider!  
Make sure to taste them, they all have their own characteristics.



Hiking is the most popular activity in the Thiérache! A dedicated insert with hike distance and duration can be found on the Tourist Map. With 55 marked trails, you will definitely find something for your level and your taste. Whether you are walking, biking or horseback riding you will experience the beautifully preserved natural settings of rivers, woods and meadows lined with hedges, where historical vestiges mingle with crafts and present-day activities.



**LAIT 2 FERMES**  
2, rue de la Hérie  
02500 EPARCY  
06 74 96 67 07  
[lait-2-fermes.fr](http://lait-2-fermes.fr)



**FERME DE LA FONTAINE ORION**  
1, rue de Hurtebise  
02140 HAUTION  
03 23 98 22 50  
[maroilles-claire-halleux.fr](http://maroilles-claire-halleux.fr)



**MAROILLES FAUQUET**  
28, rue de la Croix  
02170 LE NOUVION-EN-THIERACHE  
03 23 98 35 70  
[quiveutdufromage.com](http://quiveutdufromage.com)



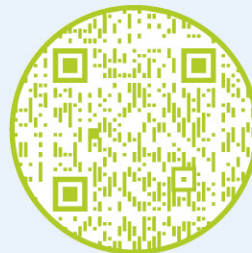
**MAROILLES LESIRE ET ROGER**  
9, rue Dardennes  
02500 MONDREPUIS  
03 23 58 13 51  
[maroilles-lesire.fr](http://maroilles-lesire.fr)



**MAROILLES LEDUC**  
4, route de La Capelle  
02260 SOMMERON  
03 23 97 23 86  
[leduc-maroilles.com](http://leduc-maroilles.com)

## BOCAGE AND HIKING TRAILS

Free  
download of all  
our hiking maps:



A problem on your  
route? Please let us know!



**OFFICE DE TOURISME  
DU PAYS DE THIÉRACHE**

7 avenue du Préau - 02140 VERVINS  
03 23 91 30 10 • [accueil@tourisme-thierache.fr](mailto:accueil@tourisme-thierache.fr)

**OFFICE  
DE TOURISME**

**La  
Thiérache**

[tourisme-thierache.fr](http://tourisme-thierache.fr)

**HAUT & FORT**  
HAUTS-DE-FRANCE